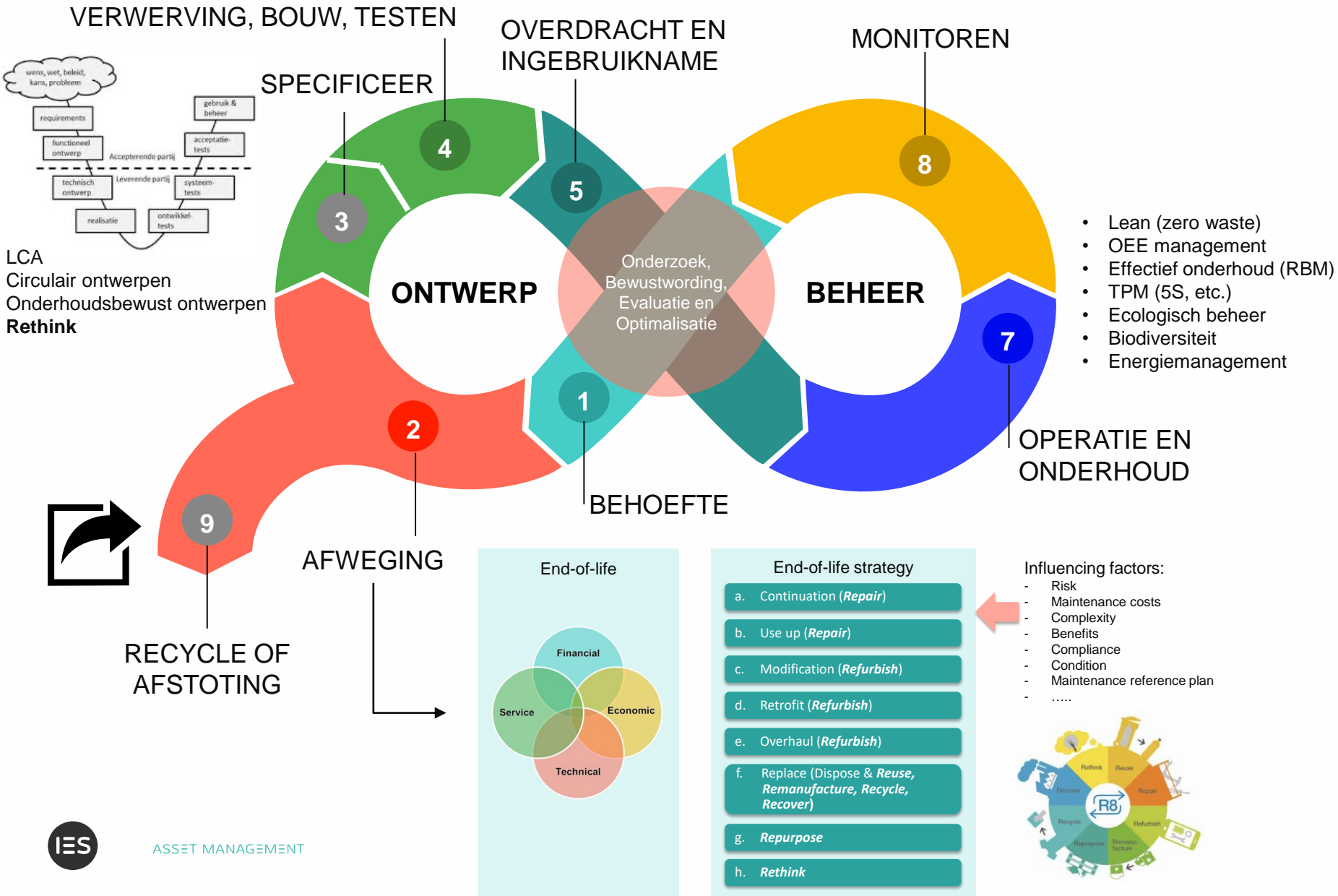




# ASSETMANAGEMENT EN CIRCULARITEIT

ASSET MANAGEMENT

# ASSETMANAGEMENT EN CIRCULARITEIT



- LCA
- Circulair ontwerpen
- Onderhoudsbewust ontwerpen
- **Rethink**

- Lean (zero waste)
- OEE management
- Effectief onderhoud (RBM)
- TPM (5S, etc.)
- Ecologisch beheer
- Biodiversiteit
- Energiemanagement

# END-OF-LIFE FRAMEWORK

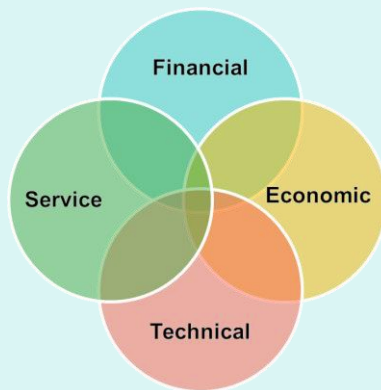
End of life planning  
(as part of Asset Management Plan)

Deactivation  
trigger

How to proceed?

Execution

End-of-life



End-of-life strategy

- Continuation (*Repair*)
- Use up (*Repair*)
- Modification (*Refurbish*)
- Retrofit (*Refurbish*)
- Overhaul (*Refurbish*)
- Replace (Dispose & *Reuse, Remanufacture, Recycle, Recover*)
- Repurpose*
- Rethink*

Influencing factors:

- Risk
- Maintenance costs
- Complexity
- Benefits
- Compliance
- Condition
- Maintenance reference plan
- .....



# END-OF-LIFE STRATEGIES

## a. Continuation

- Continue or adjust current maintenance so that assets are optimally maintained for their required function.

## b. Use-up

- With the use-up strategy, the asset remains in use until the end of economic life is reached. No extra maintenance.

## c. Modification\*

- One or more components of the asset are replaced and improved so that it can better meet the functional requirements or, for example, increase safety.

## d. Retrofit\*

- One or more components of the asset are replaced with more modern equivalent components.

## e. Overhaul\*

- The asset is completely overhauled and restored so that it becomes "as good as new" again.

## f. Replace & Dispose

- The asset is decommissioned as soon as it is no longer considered usable. The asset will either be replaced by a similar new asset or with an asset with different functionality. Or the activity for which the asset was used will stop.

## g. Repurpose

- Find another purpose or usage for the current asset.

## h. Rethink

- Reconsider whether it is needed to develop or buy a new asset. Are other options possible?

\*Modification, retrofit and overhaul are often elements of a lifetime extension strategy.



**VRAGEN OF IDEEËN?**

E [diederik.van.leeuwen@iesbv.nl](mailto:diederik.van.leeuwen@iesbv.nl)

T 070 - 7400470

W [www.iesbv.nl](http://www.iesbv.nl)